

Injection Date : Wed, 8. Nov. 2023

Seq Line : 42

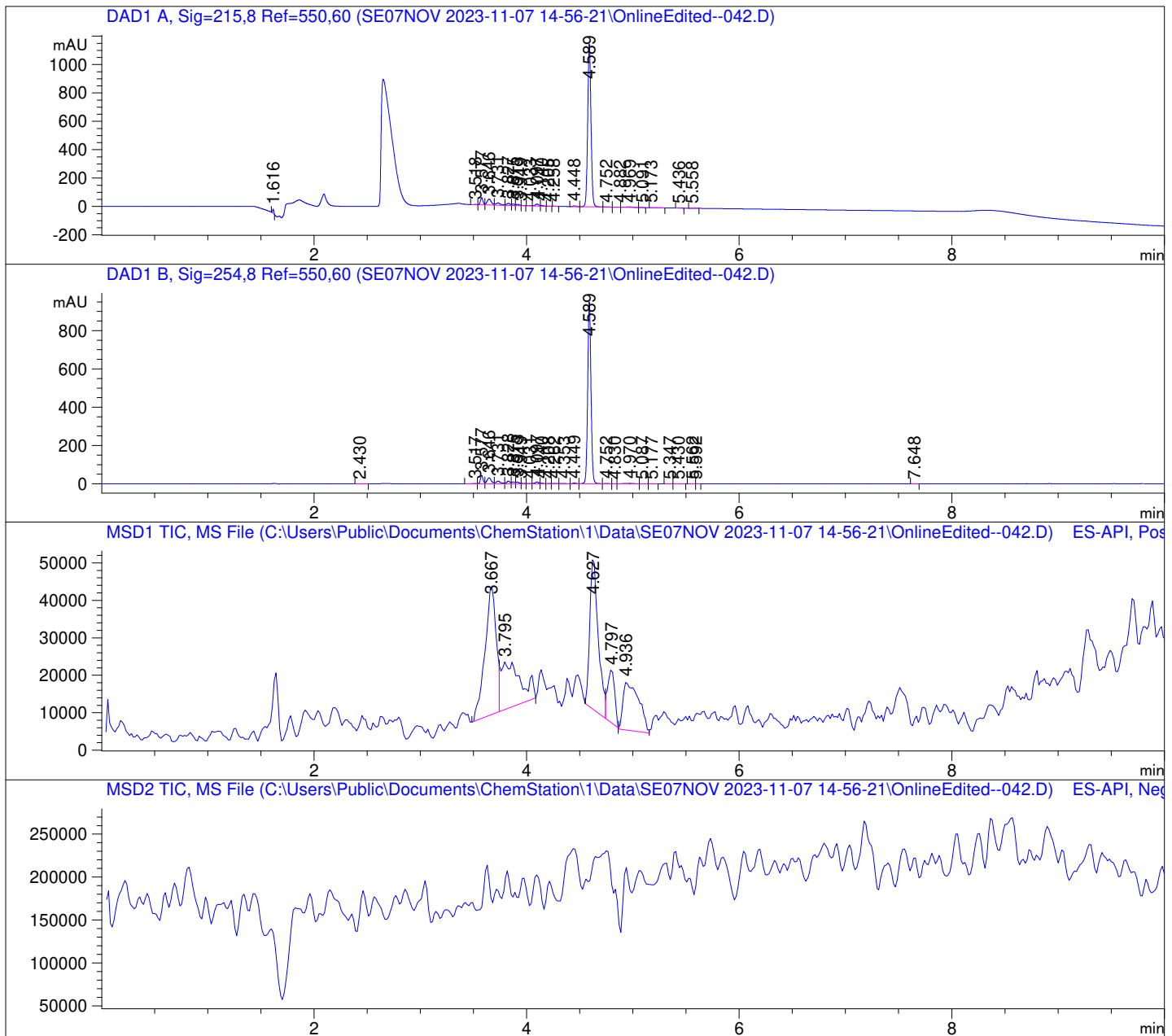
Location : 79

Inj. Vol. : 2 µl

Acq. Method : C:\Users\Public\Documents\ChemStation\1\Data\SE07NOV 2023-11-07
14-56-21\22010446 LCMS-6.M

Analysis Method : C:\Users\Public\Documents\ChemStation\1\Data\SE07NOV 2023-11-07
14-56-21\22010446 LCMS-6.M (Sequence Method)

Waters XBridge Phenyl (4.6 * 150 mm; 3.5 µm); 0.05% TFA (aq) / AcN: 100/0 (0.0 min) -
-> (6.0 min) --> 70/30 (0.0 min) --> (2.0 min) --> 10/90 (2.0 min); Flow: 1.0 ml/min;
MSD1 = positive; MSD2 = negative



DAD1 A, Sig=215,8 Ref=550,60

Peak #	Ret. Time [min]	Area [mV *s]	Area %
1	1.616	25.090	0.854
2	3.518	3.753	0.128
3	3.577	82.427	2.806
4	3.646	115.379	3.928
5	3.731	50.967	1.735
6	3.827	34.517	1.175
7	3.875	19.706	0.671
8	3.913	20.616	0.702
9	3.949	2.888	0.098
10	4.033	4.418	0.150
11	4.097	31.123	1.060
12	4.140	7.177	0.244
13	4.205	1.424	0.048
14	4.258	1.046	0.036
15	4.448	12.997	0.443
16	4.589	2493.539	84.898
17	4.752	6.539	0.223
18	4.882	2.875	0.098
19	4.969	17.496	0.596
20	5.091	0.529	0.018
21	5.173	0.903	0.031
22	5.436	0.572	0.019
23	5.558	1.122	0.038

DAD1 B, Sig=254,8 Ref=550,60

Peak #	Ret. Time [min]	Area [mV *s]	Area %
1	2.430	0.408	0.017
2	3.517	4.885	0.202
3	3.577	74.747	3.091
4	3.646	88.960	3.679
5	3.731	44.158	1.826
6	3.828	31.673	1.310
7	3.875	19.840	0.820
8	3.913	19.610	0.811
9	3.949	4.253	0.176
10	4.031	5.119	0.212
11	4.097	24.092	0.996
12	4.140	6.611	0.273
13	4.208	2.686	0.111
14	4.262	3.921	0.162
15	4.353	4.280	0.177
16	4.449	8.943	0.370
17	4.589	2053.592	84.919
18	4.752	4.221	0.175
19	4.830	1.101	0.046
20	4.970	12.352	0.511
21	5.087	0.458	0.019
22	5.177	0.443	0.018
23	5.347	0.168	0.007
24	5.430	0.564	0.023
25	5.562	0.815	0.034

Data -> C:\Users\Public\Documents\ChemStation\1\Data\SE07NOV 2023-11-07 14-56-21\ ->
Sample-> CPT22010446-19-D2-80deg-24h

Peak #	Ret. Time [min]	Area [mV *s]	Area %
26	5.592	0.243	0.010
27	7.648	0.158	0.007

